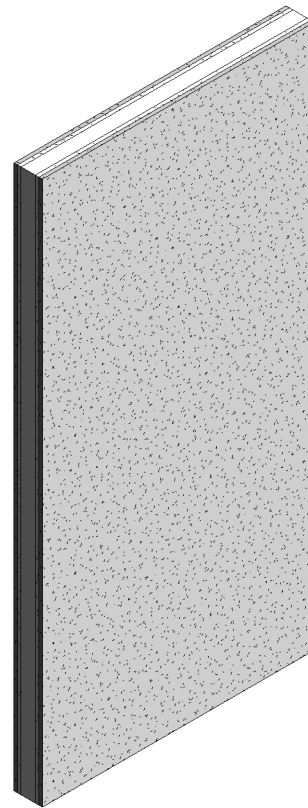
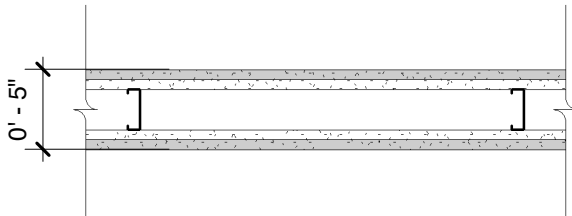


DensShield® Tile Backer

Base Layer: 5/8" (15.9 mm) **ToughRock® Fireguard®** or 5/8" (15.9 mm) **DensArmor Plus® Fireguard®** gypsum board applied vertically to each side of 2-1/2" (64 mm) steel studs 24" (610 mm) o.c. with 1" (25 mm) Type S screws 6" (152 mm) o.c.

Face Layer: 5/8" (15.9 mm) **DensShield® Fireguard® Tile Backer** gypsum board applied vertically to each side with drywall adhesive or secured with 1-5/8" (41 mm) Type S screws 6" (152 mm) o.c. at top and bottom track, 6" (152 mm) o.c. at edge joints and intermediate framing. Stagger joints 24" (610 mm) each layer and side.

Sound Tested with 2-1/2" (64 mm) fiberglass insulation.



Website: www.gpgypsum.com

Georgia-Pacific Gypsum

133 Peachtree St.
Atlanta, Georgia 30303
PH: 1-(800)-225-6119

DensShield® Tile Backer

| | | |
|-------------|---------------|-------------------|
| Assembly: | U411-03 | UL U411 |
| Date: | December 2012 | |
| Drawn by: | JAT | Fire Rating: 2 Hr |
| Checked by: | RSS | |