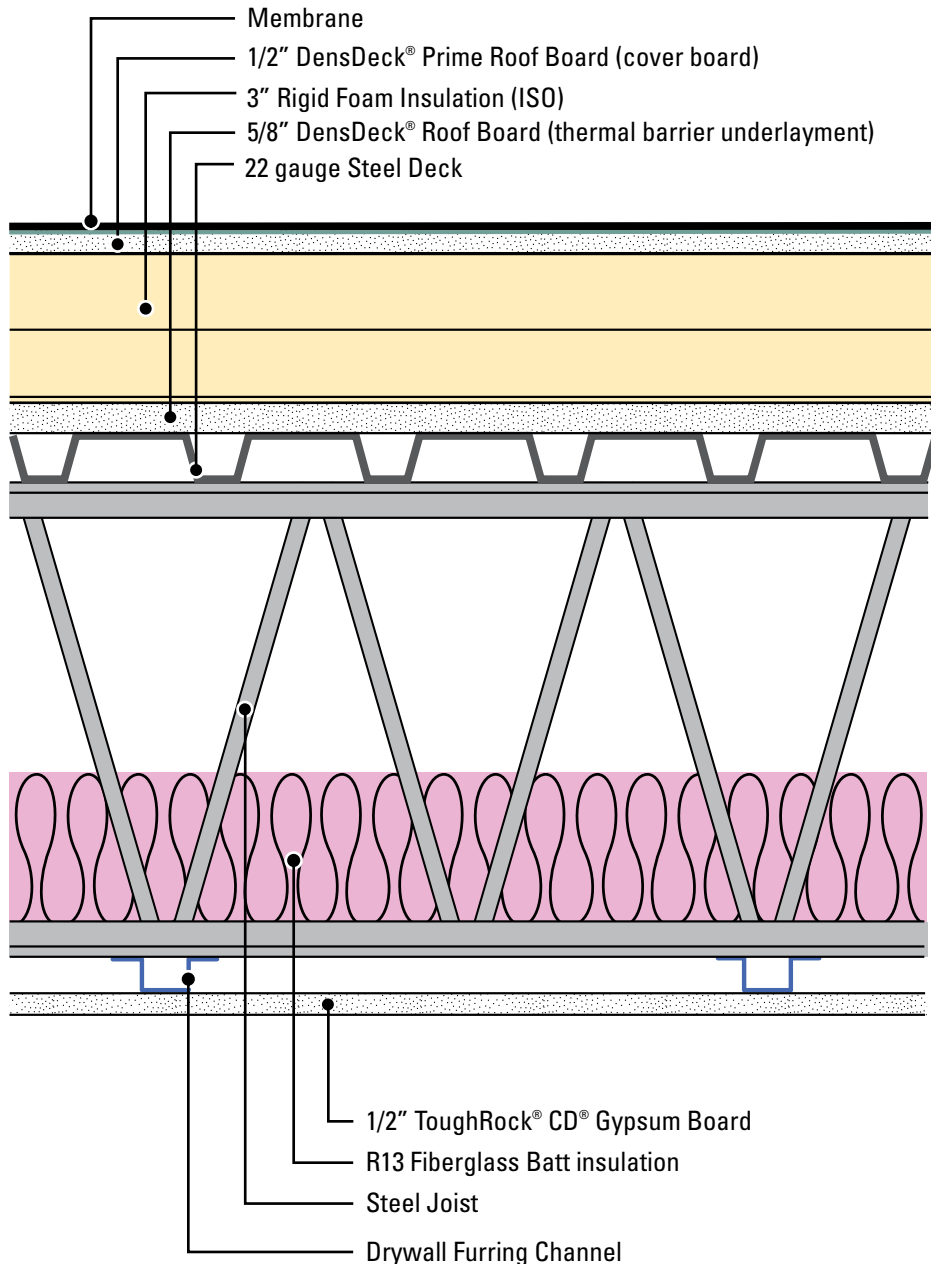


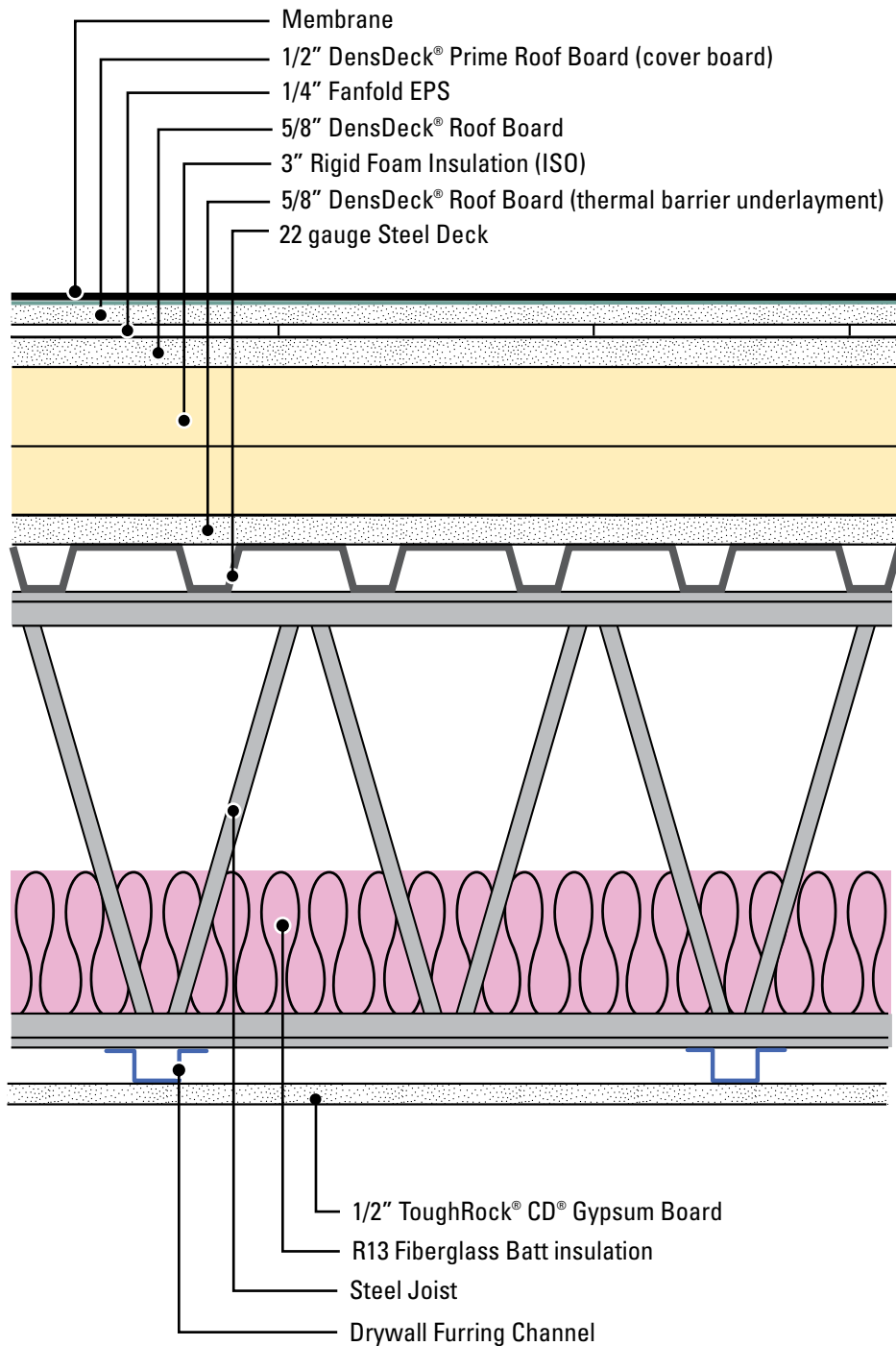
**STC=56**  
RAL#TL11-006



Tests per ASTM E 90 and ASTM E 413, were conducted in 2011 at Riverbank Acoustical Laboratories. Results are based on characteristics, properties and performance of materials and systems obtained under controlled test conditions. Actual results may vary.

Assemblies are presented for illustration only. It is important that you consult a design professional for assembly information. Georgia-Pacific Gypsum does not provide architectural or engineering services.

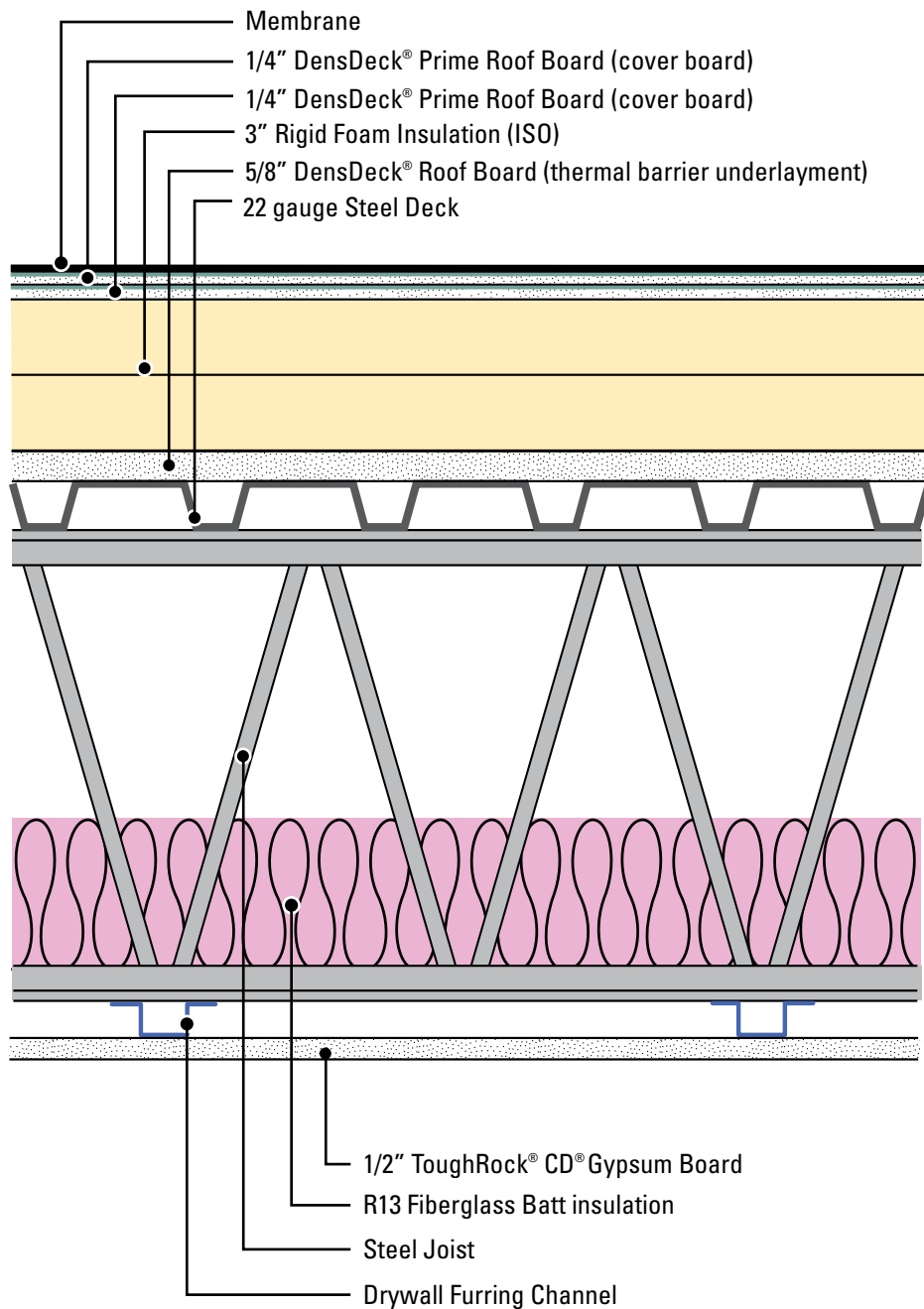
**STC=57**  
**RAL#TL11-007**



Tests per ASTM E 90 and ASTM E 413, were conducted in 2011 at Riverbank Acoustical Laboratories. Results are based on characteristics, properties and performance of materials and systems obtained under controlled test conditions. Actual results may vary.

Assemblies are presented for illustration only. It is important that you consult a design professional for assembly information. Georgia-Pacific Gypsum does not provide architectural or engineering services.

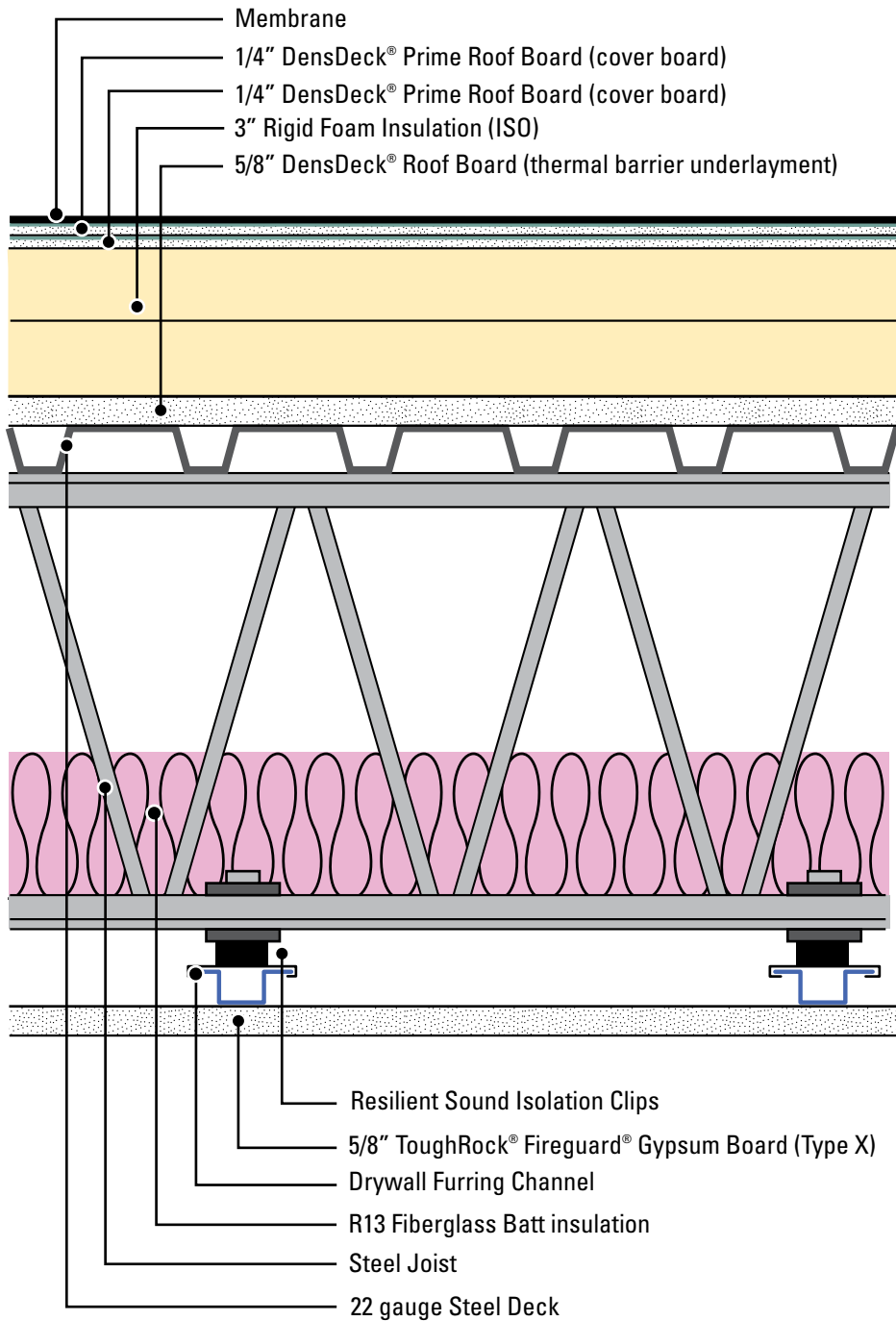
**STC=56**  
**RAL#TL11-014**



Tests per ASTM E 90 and ASTM E 413, were conducted in 2011 at Riverbank Acoustical Laboratories. Results are based on characteristics, properties and performance of materials and systems obtained under controlled test conditions. Actual results may vary.

Assemblies are presented for illustration only. It is important that you consult a design professional for assembly information. Georgia-Pacific Gypsum does not provide architectural or engineering services.

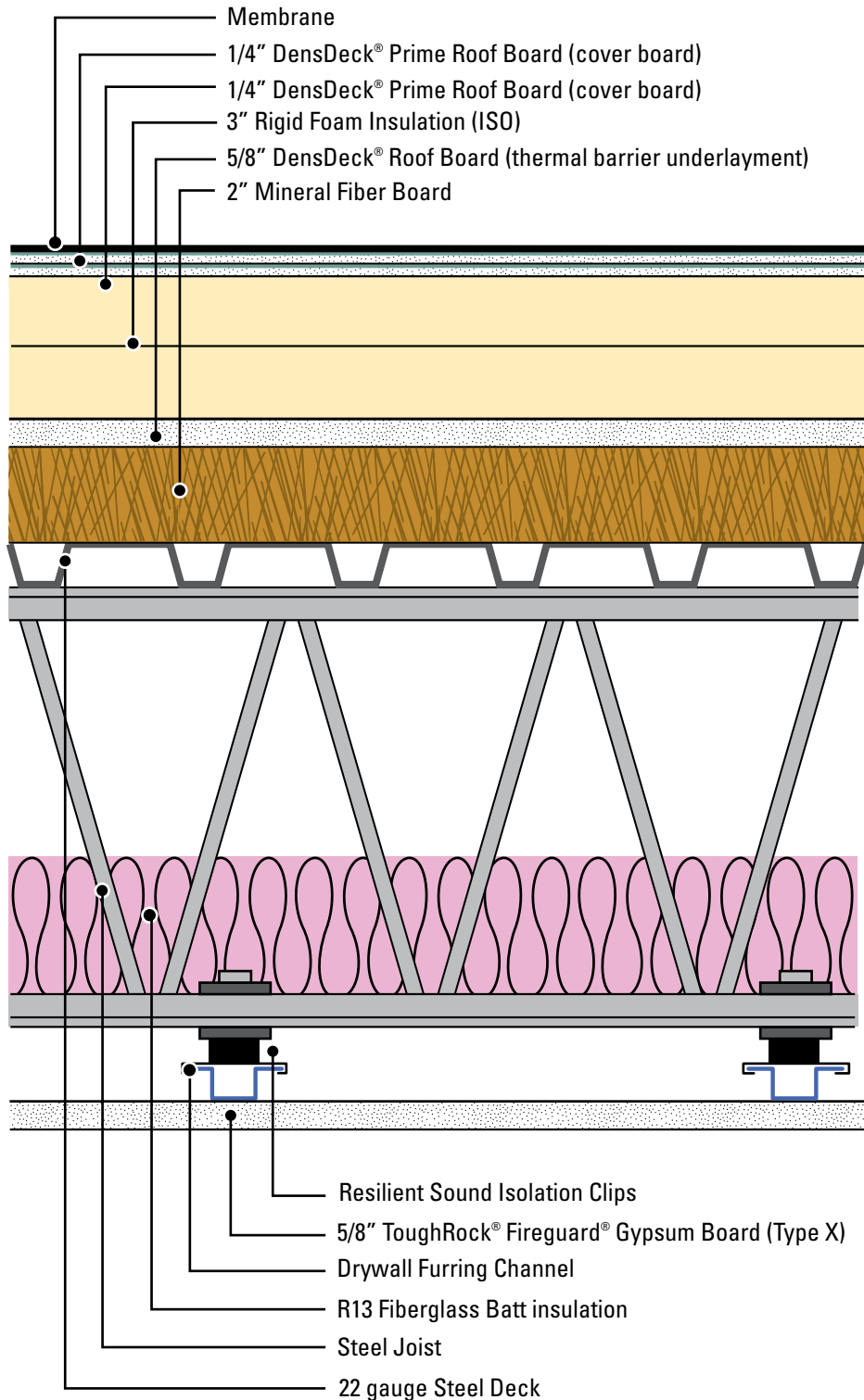
**STC=58**  
RAL#TL11-015



Tests per ASTM E 90 and ASTM E 413, were conducted in 2011 at Riverbank Acoustical Laboratories. Results are based on characteristics, properties and performance of materials and systems obtained under controlled test conditions. Actual results may vary.

Assemblies are presented for illustration only. It is important that you consult a design professional for assembly information. Georgia-Pacific Gypsum does not provide architectural or engineering services.

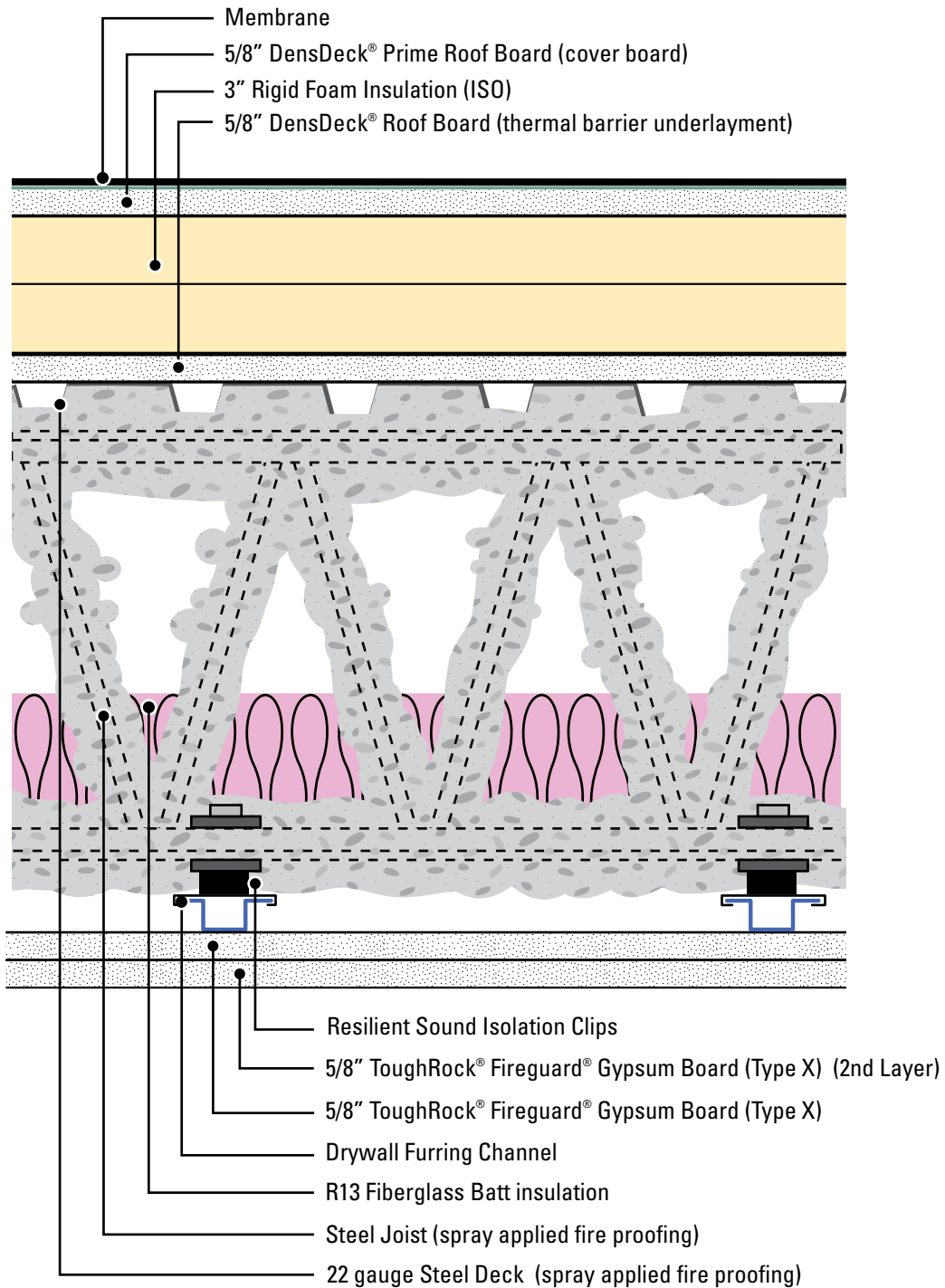
**STC=59**  
**RAL#TL11-016**



Tests per ASTM E 90 and ASTM E 413, were conducted in 2011 at Riverbank Acoustical Laboratories. Results are based on characteristics, properties and performance of materials and systems obtained under controlled test conditions. Actual results may vary.

Assemblies are presented for illustration only. It is important that you consult a design professional for assembly information. Georgia-Pacific Gypsum does not provide architectural or engineering services.

**STC=61**  
RAL#TL11-065



Tests per ASTM E 90 and ASTM E 413, were conducted in 2011 at Riverbank Acoustical Laboratories. Results are based on characteristics, properties and performance of materials and systems obtained under controlled test conditions. Actual results may vary.

Assemblies are presented for illustration only. It is important that you consult a design professional for assembly information. Georgia-Pacific Gypsum does not provide architectural or engineering services.