

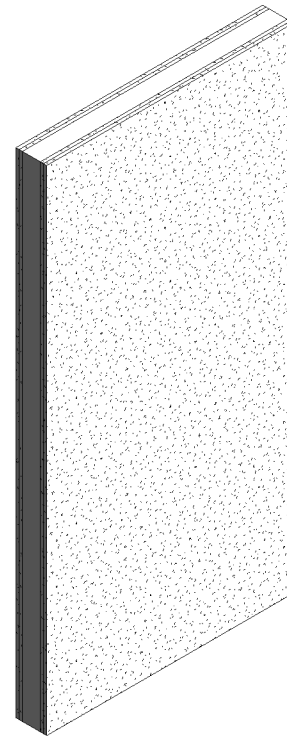
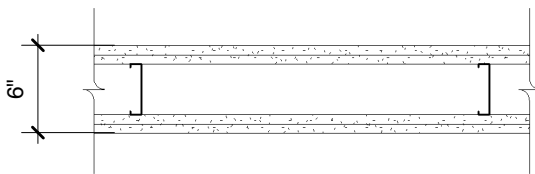
# DensArmor Plus® Abuse-Resistant Panel

## Steel-Framed Wall

**Base Layer:** 5/8" (15.9 mm) **ToughRock® Abuse-Resistant** or 5/8" (15.9 mm) **DensArmor Plus® Fireguard®** gypsum board applied vertically to each side of 3-1/2" (89 mm) 20-gauge (30 mils) steel studs 24" (610 mm) o.c. with 1" (25 mm) Type S-12 drywall screws 12" (305 mm) o.c.

**Face Layer:** 5/8" (15.9 mm) **ToughRock® Fireguard®** or 5/8" (15.9 mm) **DensArmor Plus® Fireguard®** gypsum board applied vertically to each side with 1-5/8" (41 mm) Type S-12 drywall screws 12" (305 mm) o.c. Studs attached to each side of the floor and ceiling runners by welding or with 1/2" (12.7 mm) Type S-12 panhead screws. Joints staggered 24" (610 mm) each layer and side.

**Bracing:** Lateral bracing spaced not over 40" (1,016 mm) o.c. shall be 1" (25 mm) by 18-gauge (43 mils) steel straps attached to each side or channel bracing attached to each stud with a clip angle. For studs with holes or punch-outs in the web the "Q" factor shall be determined by means of stub column tests. Tested at 80 percent of design load. (LIMITED LOAD-BEARING)



Website: [www.gpgypsum.com](http://www.gpgypsum.com)

## Georgia-Pacific Gypsum

133 Peachtree St.  
Atlanta, Georgia 30303  
PH. 1-(800)-225-6119

## DensArmor Plus® Abuse-Resistant Panel

|             |               |                   |
|-------------|---------------|-------------------|
| Assembly:   | U425-05       | UL U425           |
| Date:       | December 2012 |                   |
| Drawn by:   | JAT           | Fire Rating: 2 Hr |
| Checked by: | RSS           |                   |