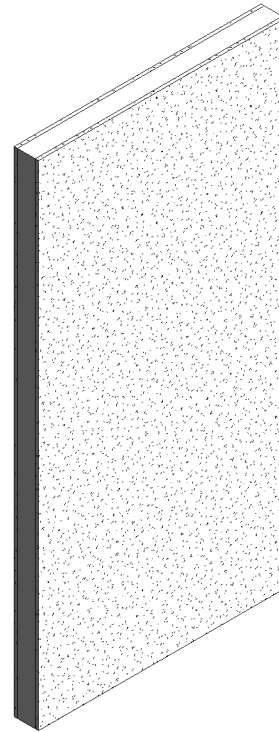
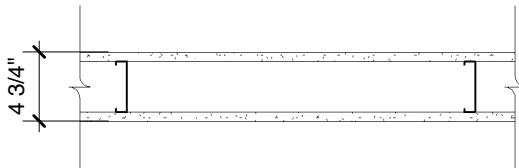


ToughRock® Fireguard® Gypsum Board

Steel-Framed Wall

5/8" (15.9 mm) **ToughRock® Fireguard® Impact Resistant** or 5/8" (15.9 mm) **ToughRock® Fireguard®** or 5/8" (15.9 mm) **DensArmor Plus® Fireguard®** gypsum board applied vertically to min. 3-1/2" (89 mm) corrosion resistant 20-gauge (30 mils) steel studs 24" (610 mm) o.c. with 1" (25 mm) Type S corrosion resistant bugle head screws 12" (305 mm) o.c. Joint staggered 24" (610 mm) on opposite sides.



Website: www.gpgypsum.com

Georgia-Pacific Gypsum

133 Peachtree St.
Atlanta, Georgia 30303
PH. 1-(800)-225-6119

ToughRock® Fireguard® Gypsum Board

Assembly:	U425-01	UL U425
Date:	December 2012	
Drawn by:	JAT	Fire Rating: 1 Hr
Checked by:	RSS	