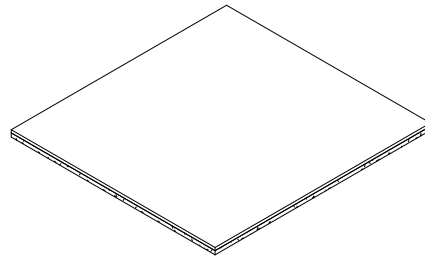
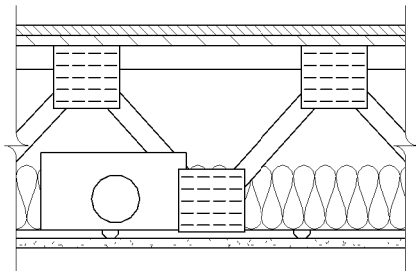


# DensArmor Plus® Fireguard C® Floor-Ceiling

## Floor/Ceiling Wood-Framed

5/8" (15.9 mm) **ToughRock® Fireguard C®** or 5/8" (15.9 mm) **DensArmor Plus® Fireguard C®** gypsum board applied perpendicular to resilient channels 24" (610 mm) o.c. Gypsum board secured with 1" (25 mm) long Type S bugle head steel screws. Screws spaced 1/2" (12.7 mm) and 6" (152 mm) from side joints and 12" (305 mm) o.c. in the rest of the field. Screws spaced 3" (76 mm) from the stud joints. End joints secured to both resilient channels. When batt insulation is draped over the resilient channel and 5/8" (15.9mm) **ToughRock® Fireguard C®** gypsum panels ceiling membrane, screws spaced 1/2" (12.7 mm) and 4" (102 mm) from side joints and 8" (203 mm) o.c. to the rest of the field.



Website: [www.gpgypsum.com](http://www.gpgypsum.com)

## Georgia-Pacific Gypsum

133 Peachtree St.  
Atlanta, Georgia 30303  
PH: 1-(800)-225-6119

## DensArmor Plus® Fireguard C® Floor-Ceiling

Assembly:	M503	UL M503
Date:	December 2012	
Drawn by:	JAT	
Checked by:	RSS	Fire Rating: 1 Hr