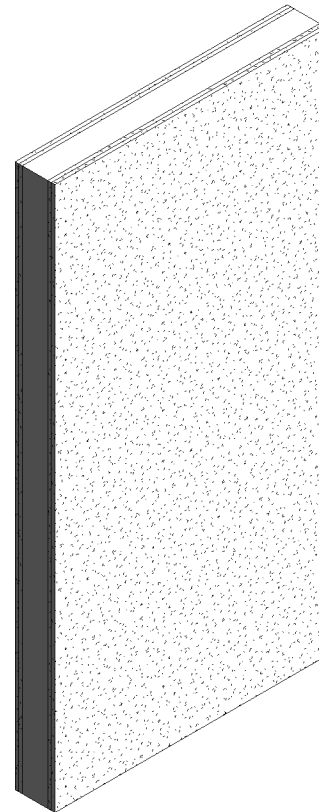
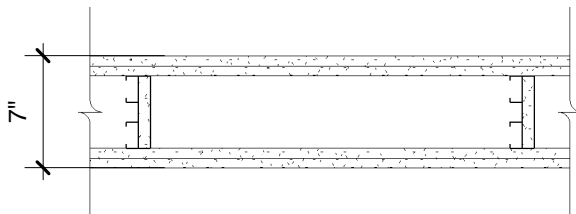


# DensArmor Plus® Abuse-Resistant Panel

**Base Layer:** 5/8" (15.9 mm) **DensArmor Plus® Abuse-Resistant** gypsum board applied vertically to a double row of 1-5/8" (41 mm) steel studs 24" (610 mm) o.c. and not less than 1" (25 mm) apart with 1" (25 mm) Type S drywall screws 8" (203 mm) o.c. at edges and 12" (305 mm) o.c. at intermediate studs. 5/8" (15.9 mm) gypsum board pieces 12" (305 mm) long by 4-1/2" (114 mm) wide located at 1/3 points used as cross braces fastened to stud pairs with three 1" (25 mm) Type S drywall screws at each end of brace. Optional 25-gauge (18 mils), stud or runner pieces not less than 4-1/2" (114 mm) long, may be used as cross braces and attached with two No. 8, 1/2" (13 mm) self-drilling steel screws at each end. Where total cavity depth exceeds 9-1/2" (241 mm), cross braces shall be fabricated with 20-gauge (30 mils) stud or runner pieces.

**Face Layer:** 5/8" (15.9 mm) **ToughRock® Fireguard®** or 5/8" (15.9 mm) **DensArmor Plus® Fireguard®** applied vertically to each side with 1-5/8" (41 mm) Type S drywall screws 8" (203 mm) o.c. at joints, floor, and ceiling runners and 12" (305 mm) o.c. at intermediate studs. Sound tested with 3-1/2" (89 mm) fiberglass insulation stapled in stud space.



Website: [www.gpgypsum.com](http://www.gpgypsum.com)

**Georgia-Pacific  
Gypsum**

133 Peachtree St.  
Atlanta, Georgia 30303  
PH: 1-(800)-225-6119

DensArmor Plus® Abuse-Resistant  
Panel

Assembly:	U420-13	UL U420
Date:	December 2012	
Drawn by:	JAT	
Checked by:	RSS	Fire Rating: 2 Hr