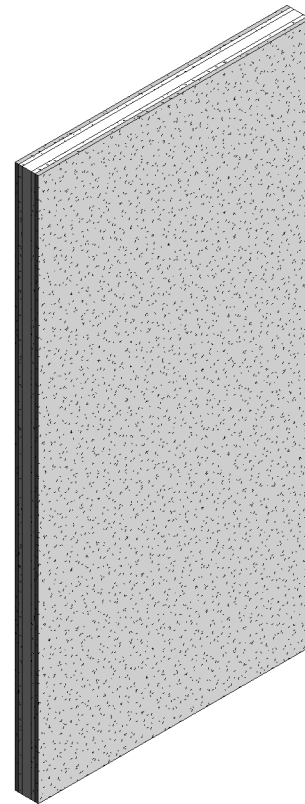
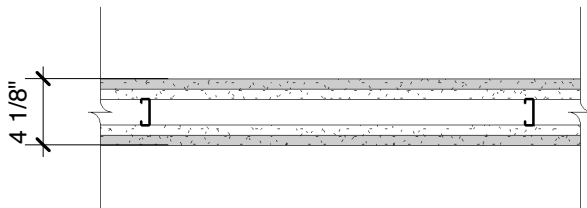


ToughRock® Mold-Guard™ Panel

Base Layer: 5/8" (15.9 mm) ToughRock® Fireguard® or 5/8" (15.9 mm) DensArmor Plus® Fireguard® or 5/8" (15.9 mm) ToughRock® Mold-Guard™ gypsum board applied horizontally or vertically to each side of 1-5/8" (41 mm) steel studs 24" (610 mm) o.c. with 1" (25 mm) Type S screws 24" (610 mm) o.c.

Face Layer: 5/8" (15.9 mm) ToughRock® Mold-Guard™ applied horizontally or vertically to each side with 1-5/8" (41 mm) Type S screws 16" (406 mm) o.c. Vertical joints centered over studs and staggered one stud cavity on opposite sides of studs. Vertical joints in adjacent layers staggered one stud cavity. Horizontal joints need not be backed by steel framing. Horizontal edge joints and horizontal butt joints on opposite sides of studs need not be staggered. Horizontal edge joints and horizontal butt joints in adjacent layers staggered a min of 12" (305 mm).



Website: www.gpgypsum.com

**Georgia-Pacific
Gypsum**

133 Peachtree St.
Atlanta, Georgia 30303
PH: 1-(800)-225-6119

ToughRock® Mold-Guard™ Panel

| | | |
|-------------|---------------|-------------------|
| Assembly: | V487-08 | UL V487 |
| Date: | December 2012 | |
| Drawn by: | JAT | |
| Checked by: | RSS | Fire Rating: 2 Hr |