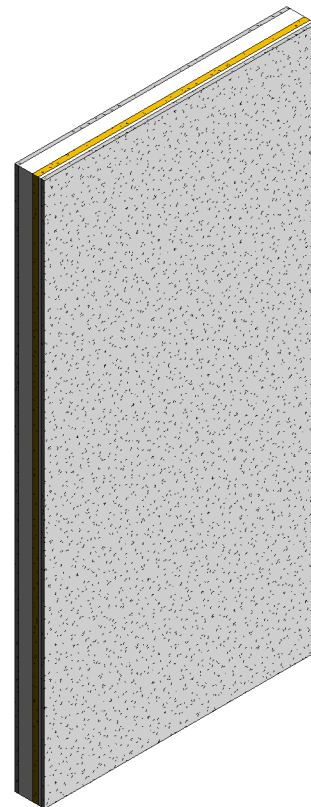
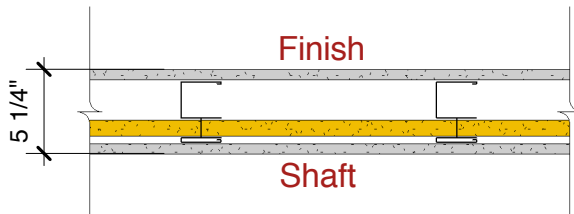


# DensGlass® Shaftliner with DensShield® Tile Backer

Fiberglass sound insulation thickness is 1" (25.4 mm), 2-1/2" (64 mm) and 3-1/2" (89 mm) for C-T or C-H studs of 2-1/2" (64 mm), 4" (102 mm) and 6" (152 mm) respectively. Finished one side. Components: 1" (25.4 mm) **DensGlass® Shaftliner** panel, C-T or C-H studs and both sides finished with of 5/8" (15.9 mm) **DensShield® Tile Backer** or 5/8" (15.9 mm) **DensArmor Plus® Fireguard®** or 5/8" (15.9 mm) **ToughRock® Fireguard®** gypsum board installed vertically. Edges and ends offset 24" (610 mm) o.c.



Website: [www.gpgypsum.com](http://www.gpgypsum.com)

## Georgia-Pacific Gypsum

133 Peachtree St.  
Atlanta, Georgia 30303  
PH: 1-(800)-225-6119

### DensGlass® Shaftliner with DensShield® Tile Backer

Assembly:	V473-03C	UL V473
Date:	December 2012	
Drawn by:	JAT	
Checked by:	RSS	Fire Rating: 2 Hr