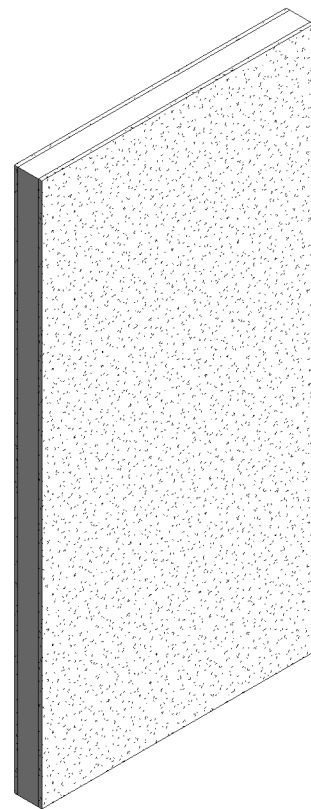
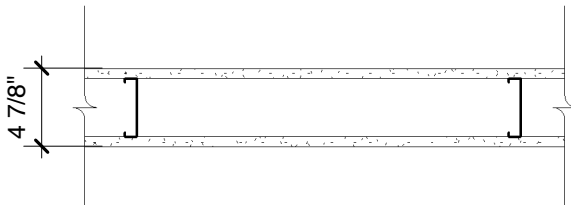


ToughRock® Fireguard® Abuse-Guard®

Steel-Framed Wall

5/8" (15.9 mm) **ToughRock® Fireguard® Abuse-Guard®** or 5/8" (15.9 mm) **ToughRock® Fireguard®** or 5/8" (15.9 mm) **DensArmor Plus® Fireguard®** gypsum board applied vertically to each side of 3-5/8" (92 mm) 20 gauge (30 mm) steel studs 24" (610 mm) o.c. with 1" (25 mm) Type S drywall screws 8" (203 mm) o.c. at edges and 12" (305 mm) o.c. at intermediate studs.

Sound Tested with 3" (76 mm) mineral fiber, 2.5 pcf (40.1 kg/m³), in stud space.



Website: www.gpgypsum.com

**Georgia-Pacific
Gypsum**

133 Peachtree St.
Atlanta, Georgia 30303
PH: 1-(800)-225-6119

**ToughRock® Fireguard®
Abuse-Guard®**

Assembly:	U465-TR AG	UL U465
Date:	December 2012	
Drawn by:	JAT	
Checked by:	RSS	Fire Rating: 1 Hr