

ToughRock® Fireguard C® Panel

Steel-Framed Wall

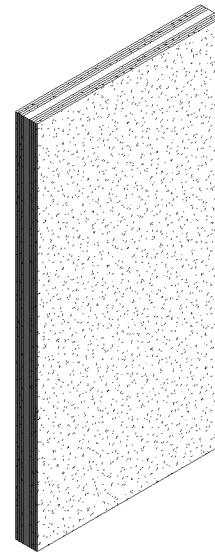
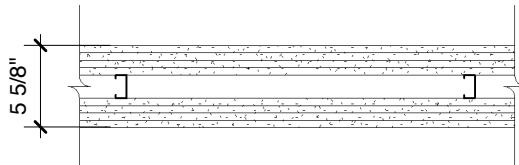
Base Layer: 1/2" (12.7 mm) ToughRock® Fireguard C® gypsum board or 1/2" (12.7 mm) DensArmor Plus® Fireguard C® applied vertically to each side of 1-5/8" (41 mm) steel studs 24" (610 mm) o.c. with 1" (25 mm) Type S drywall screws 36" (914 mm) o.c.

Second Layer: 1/2" (12.7 mm) ToughRock® Fireguard C® gypsum board or 1/2" (12.7 mm) DensArmor Plus® Fireguard C® applied vertically to each side with 1-5/8" (41 mm) Type S drywall screws 36" (914 mm) o.c.

Second Layer: 1/2" (12.7 mm) ToughRock® Fireguard C® gypsum board or 1/2" (12.7 mm) DensArmor Plus® Fireguard C® applied vertically to each side with 2-1/2" (38 mm) Type G drywall screws midway between studs 36" (914 mm) o.c. vertically.

Face Layer: 1/2" (12.7 mm) ToughRock® Fireguard C® gypsum board or 1/2" (12.7 mm) DensArmor Plus® Fireguard C® applied vertically or horizontally to each side with 2-1/4" (57 mm) Type S drywall screws 12" (305 mm) o.c. and 1-1/2" (38 mm) Type G drywall screws midway between studs 1-1/2" (38 mm) above and below horizontal joints. Joints staggered.

Sound Tested with 1-1/2" (38 mm) glass fiber insulation, friction fit in stud space.



Website: www.gpgypsum.com

Georgia-Pacific Gypsum

133 Peachtree St.
Atlanta, Georgia 30303
PH. 1-(800)-225-6119

ToughRock® Fireguard C® Panel

Assembly:	U435-01	UL U435
Date:	December 2012	
Drawn by:	JAT	Fire Rating: 4 Hr
Checked by:	RSS	