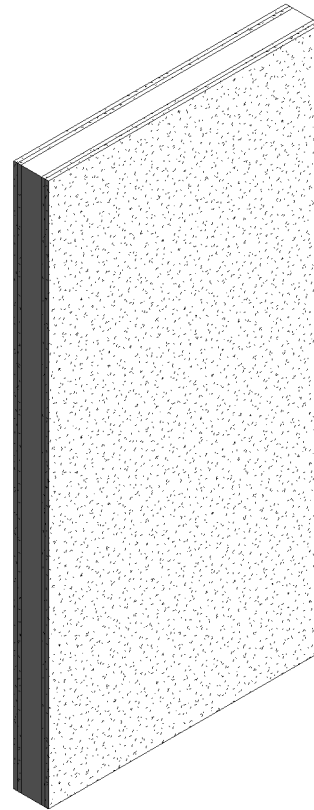
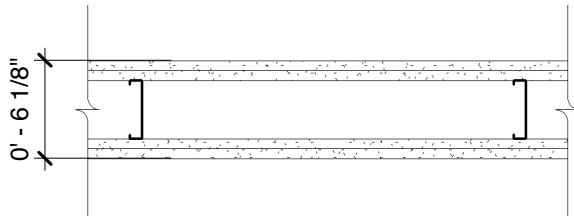


ToughRock® Mold-Guard™ Panel

Base Layer: 5/8" (15.9 mm) ToughRock® Fireguard® or 5/8" (15.9 mm) DensArmor Plus® Fireguard® gypsum board applied vertically to each side of 3-5/8" (64 mm) steel studs 24" (610 mm) o.c. with 1" (25 mm) Type S screws 16" (406 mm) o.c.

Face Layer: 5/8" (15.9 mm) ToughRock® Mold-Guard™ gypsum board applied vertically to each side with drywall adhesive or secured with 1-5/8" (41 mm) Type S screws 12" (305 mm) o.c. at top and bottom track, 16" (406 mm) o.c. at edge joints and intermediate framing. Stagger joints 24" (610 mm) each layer and side.

Sound Tested with 3-1/2" (89 mm) fiberglass insulation, friction fit in 3-5/8" (92 mm) stud space.



Website: www.gpgypsum.com

**Georgia-Pacific
Gypsum**

133 Peachtree St.
Atlanta, Georgia 30303
PH: 1-(800)-225-6119

ToughRock® Mold-Guard™ Panel

| | | |
|-------------|---------------|-------------------|
| Assembly: | U411-08A | UL U411 |
| Date: | December 2012 | |
| Drawn by: | JAT | |
| Checked by: | RSS | Fire Rating: 2 Hr |