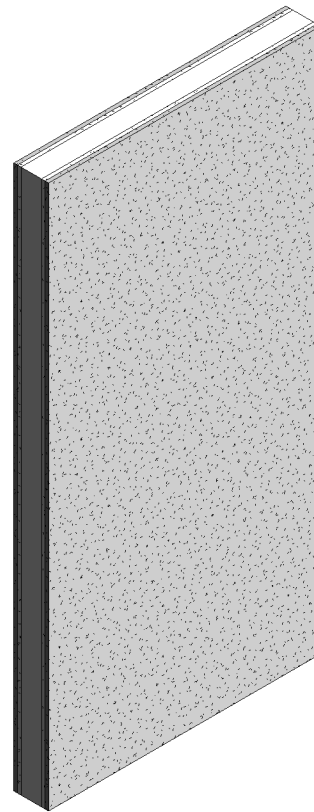
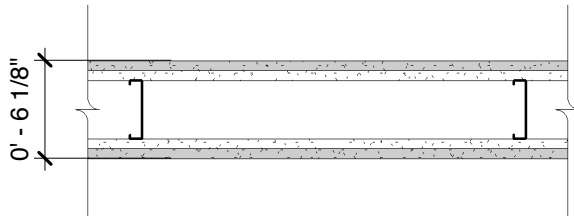


DensShield® Tile Backer

Base Layer: 5/8" (15.9 mm) **ToughRock® Fireguard®** or 5/8" (15.9 mm) **DensArmor Plus® Fireguard®** gypsum board applied vertically to each side of 3-5/8" (64 mm) 20 gauge (30 mils) steel studs 24" (610 mm) o.c. with 1" (25 mm) Type S screws 6" (152 mm) o.c.

Face Layer: 5/8" (15.9 mm) **DensShield® Fireguard® Tile Backer** gypsum board applied vertically to each side with drywall adhesive or secured with 1-5/8" (41 mm) Type S screws 6" (152 mm) o.c. at top and bottom track, 6" (152 mm) o.c. at edge joints and intermediate framing. Stagger joints 24" (610 mm) each layer and side.

Sound Tested with 3-1/2" (89 mm) fiberglass insulation, friction fit in 3-5/8" (92 mm) stud space.



Website: www.gpgypsum.com

**Georgia-Pacific
Gypsum**

133 Peachtree St.
Atlanta, Georgia 30303
PH: 1-(800)-225-6119

DensShield® Tile Backer

Assembly:	U411-03A	UL U411
Date:	December 2012	
Drawn by:	JAT	
Checked by:	RSS	Fire Rating: 2 Hr