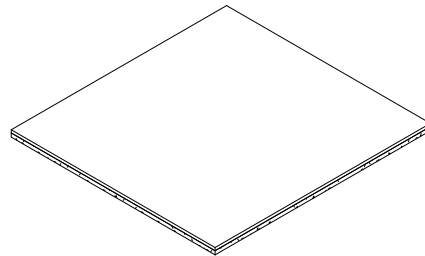
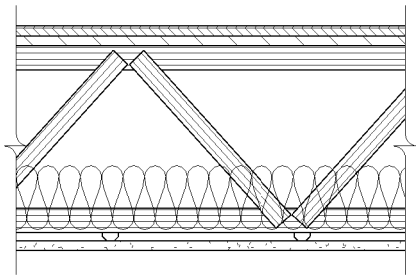


ToughRock® Fireguard C® Floor-Ceiling

Floor/Ceiling Steel-Framed

5/8" (15.9 mm) **ToughRock® Fireguard C®** or 5/8" (15.9 mm) **DensArmor Plus® Fireguard C®** gypsum board applied perpendicular to resilient channels with 1" Type S drywall screws 12" o.c. Resilient channels spaced 12" o.c. when insulation is used or 16" o.c. when no insulation is used. Resilient channels applied perpendicular to bottom chord of light-gauge steel trusses 48" o.c. with 1/2" Type S-12 screws. Optional glass fiber or mineral fiber batt. or loose fill insulation applied directly over **ToughRock® Fireguard C®** gypsum board only. Trusses supporting 23/32" wood structural panel subfloor applied perpendicular to trusses with construction adhesive and mechanical fasteners 12" o.c. and 15/32" wood structural panel underlayment applied perpendicular to trusses with mechanical fastener 12" o.c. Joints staggered between underlayment and subfloor.




Georgia-Pacific
 Gypsum
 Website: www.gpgypsum.com

**Georgia-Pacific
 Gypsum**
 133 Peachtree St.
 Atlanta, Georgia 30303
 PH: 1-(800)-225-6119

ToughRock® Fireguard C®
 Floor-Ceiling

Assembly:	M507	UL M507
Date:	December 2012	
Drawn by:	JAT	
Checked by:	RSS	Fire Rating: 1 Hr