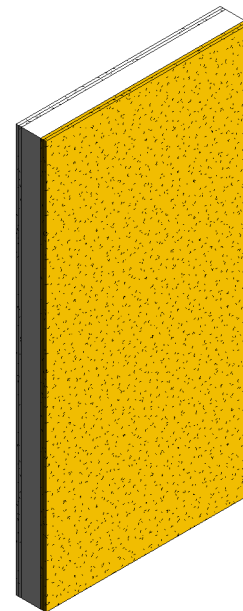
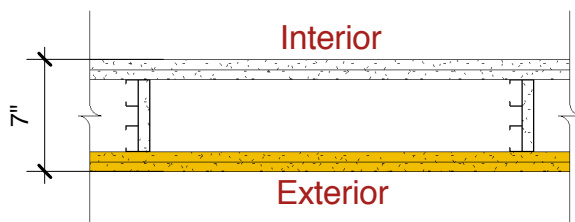


DensGlass® Sheathing

Exterior: Two layers of 5/8" (15.9 mm) **DenGlass® Fireguard® Sheathing** gypsum board applied vertically to one side of a double row of 1-5/8" (41 mm) steel studs 24" (610 mm) o.c. and not less than 1" (25 mm) apart with 1" (25 mm) Type S drywall screws 8" (203 mm) o.c. at edges and intermediate studs. Face layer attached using 1-5/8" (41 mm) Type S corrosion resistant drywall screws 8" (203 mm) at edges and intermediate studs. 5/8" (15.9 mm) gypsum board pieces 12" (305 mm) long by not less than 4-1/2" (114 mm) wide located at 1/3 points used as cross braces fastened to stud pairs with three 1" (25 mm) Type S drywall screws at each end of the brace. Optional 25 gauge (18 mils) stud or runner pieces, not less than 4-1/2" (114 mm) long, may be used as cross braces and attached with two No. 8, 1/2" (13 mm) self-drilling steel screws at each end. Where total cavity depth exceeds 9-1/2" (241 mm), cross braces shall be fabricated with 25 gauge (18 mils) stud or runner pieces.

Interior: 5/8" (15.9 mm) **ToughRock® Fireguard®** or 5/8" (15.9 mm) **DensArmor Plus® Fireguard®** applied vertically to one side. The base layers is attached using 1" (25 mm) Type S drywall screws 8" (203 mm) o.c. at edges and 12" (305 mm) o.c. at intermediate studs. Face layer is attached using 1-5/8" (41 mm) Type S drywall screws 8" (203 mm) o.c. at joints, floor, and ceiling runners and 12" (305 mm) o.c. at intermediate studs. Sound Tested 3-1/2" (89 mm) fiberglass insulation stapled in stud space.




Georgia-Pacific
 Gypsum
 Website: www.gpgypsum.com

**Georgia-Pacific
 Gypsum**
 133 Peachtree St.
 Atlanta, Georgia 30303
 PH: 1-(800)-225-6119

DensGlass® Sheathing

Assembly:	U420-10	UL U420
Date:	December 2012	
Drawn by:	JAT	
Checked by:	RSS	
Fire Rating:		2 Hr