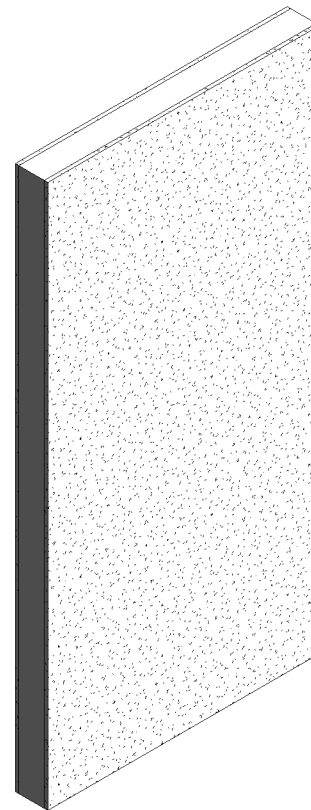
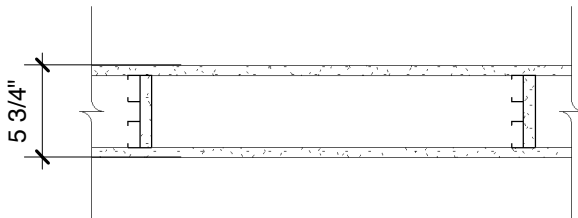


DensArmor Plus® Impact-Resistant Panel

5/8" (15.9 mm) **DensArmor Plus® Impact-Resistant** or 5/8" (15.9 mm) **DensArmor Plus® Fireguard®** or 5/8" (15.9 mm) **ToughRock® Fireguard®** gypsum board applied vertically to a double row of 1-5/8" (41 mm) steel studs 20 gauge (30 mm) 24" (610 mm) o.c. and not less than 1" (25 mm) apart with 1" (25 mm) Type S drywall screws 8" (203 mm) o.c. at edges and top and bottom runners, 12" (305 mm) o.c. in field. Stagger joints 24" (610 mm) each side. 5/8" (15.9 mm) gypsum board pieces 12" (305 mm) long x 4-1/2" (114 mm) wide located at 1/3 points used as cross braces fastened to stud pairs with three 1" (25 mm) Type S drywall screws at each end of brace. Optional 25-gauge (18 mils), stud or runner pieces not less than 4-1/2" (114 mm) long may be used as cross braces and attached with two No. 8, 1/2" (13 mm) self-drilling steel screws at each end. Sound Tested with 3-1/2" (89 mm) fiberglass insulation, stapled to one side in cavity.



Website: www.gpgypsum.com

Georgia-Pacific Gypsum

133 Peachtree St.
Atlanta, Georgia 30303
PH: 1-(800)-225-6119

DensArmor Plus® Impact-Resistant Panel

| | | |
|-------------|---------------|-------------------|
| Assembly: | U420-06 | UL U420 |
| Date: | December 2012 | |
| Drawn by: | JAT | |
| Checked by: | RSS | Fire Rating: 1 Hr |